

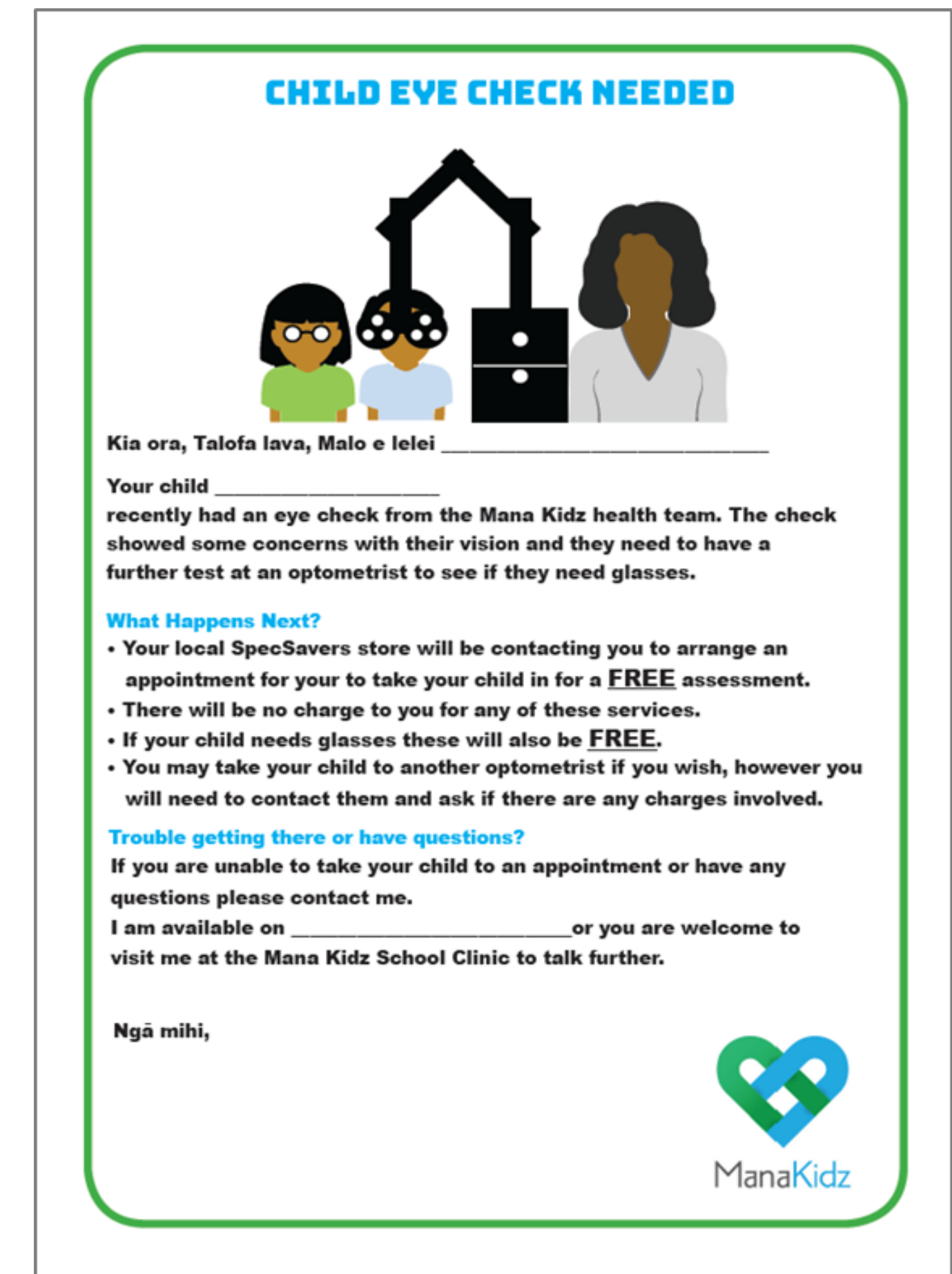
Achieving equitable outcomes in eye health

Improving access for Māori and Pacific children in Mana Kidz

Laura Broome, Phil Light, Donna Kielar, Carissa Muru, David Jansen
National Hauora Coalition

Introduction

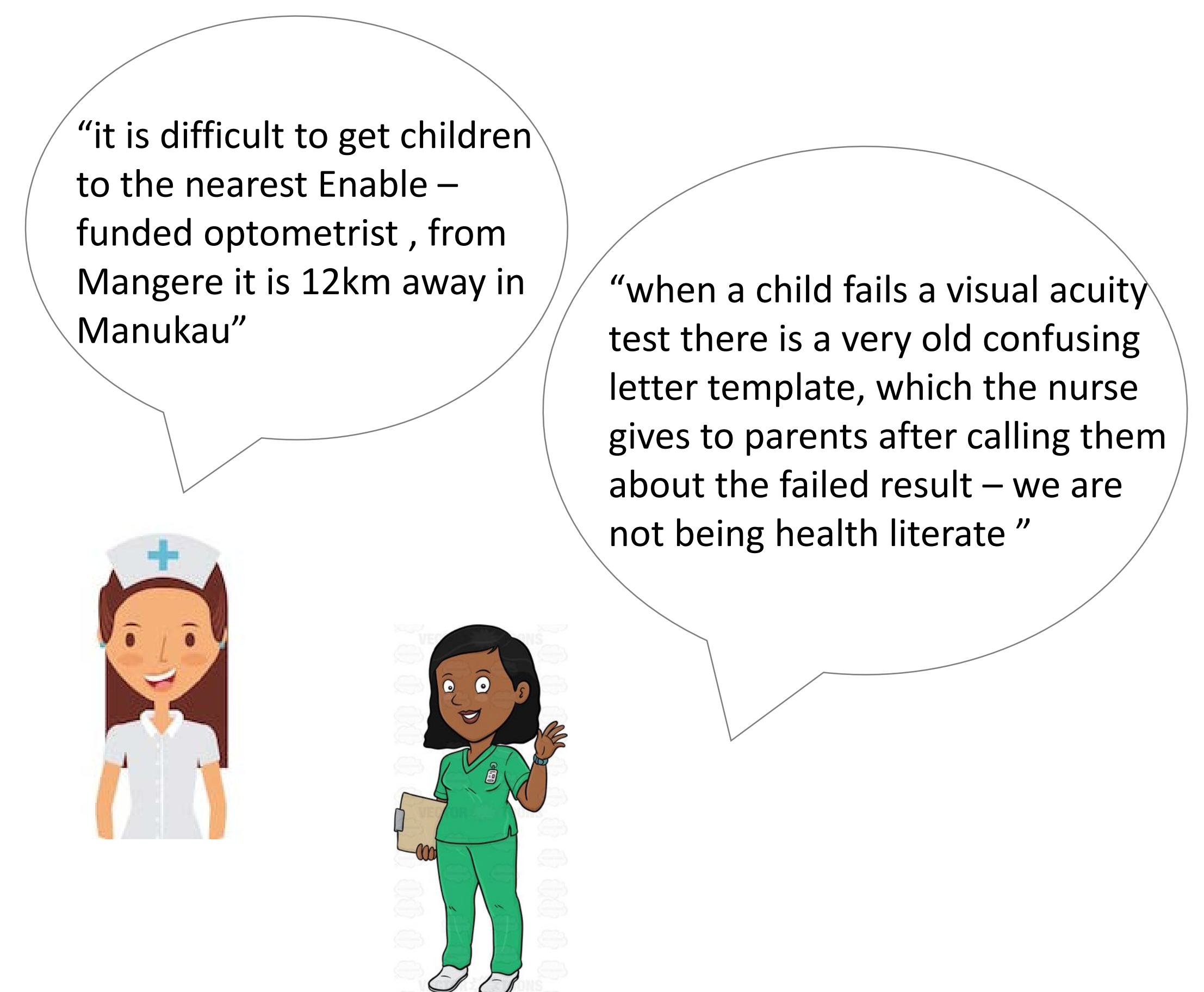
- Mana Kidz provides comprehensive school health services to 35,000 children enrolled in decile 1-3 schools in communities of South Auckland. 90% of the children are of Māori and Pacific island ethnicity.
- A child's ability to see directly impacts on their ability to learn and succeed at school and the programme aims to ensure all children who fail a visual acuity test receive corrective glasses and improved vision.
- Currently many children who are referred to an optometrist do not attend their appointments and do not receive glasses. There is considerable scope to improve the current process or work differently to ensure children receive corrected vision
- This project aims to improve access to services by simplifying and standardising the clinical processes and reduce access barriers for children using the model for improvement methodology.



Diagnosing the problem

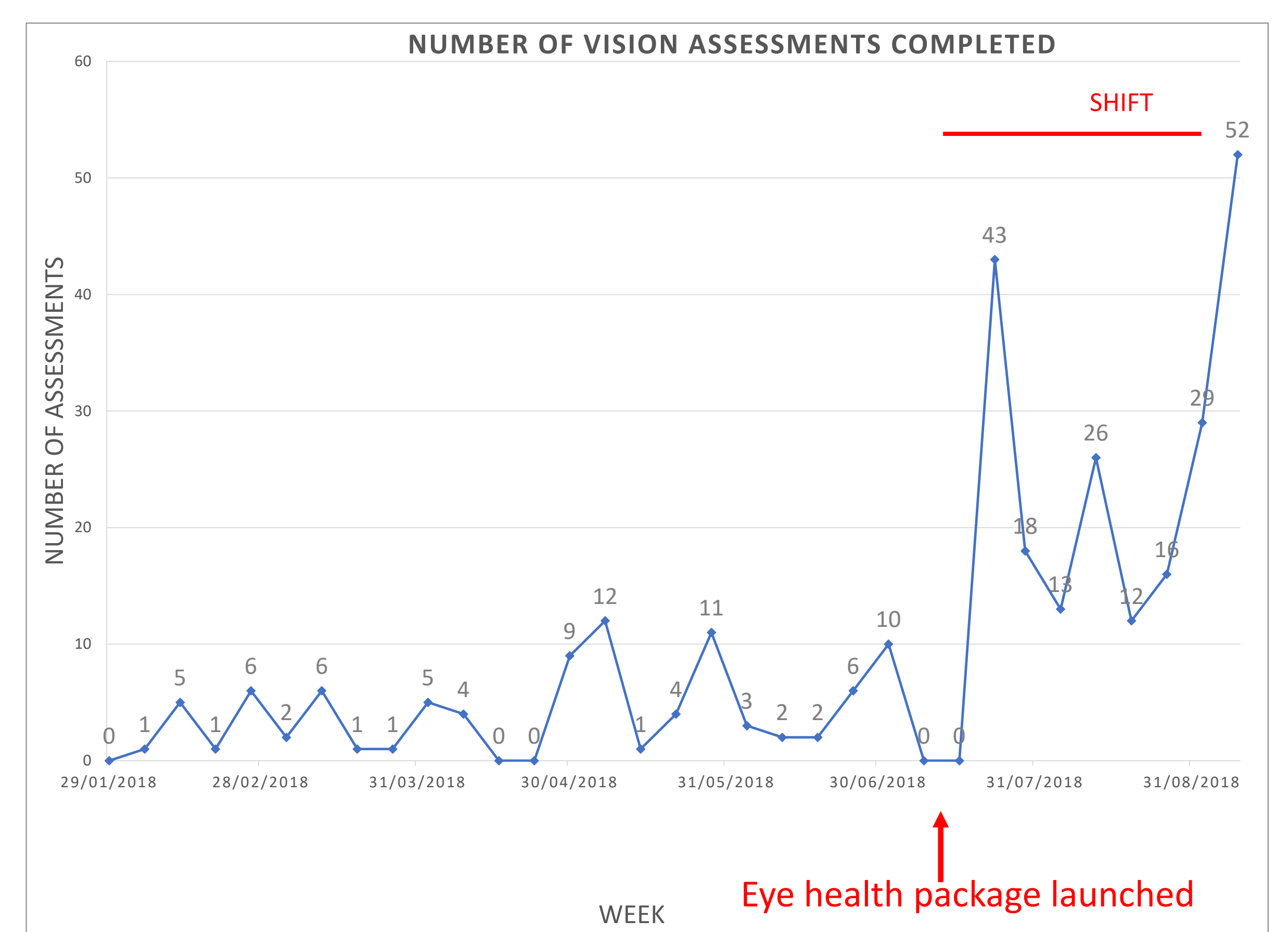
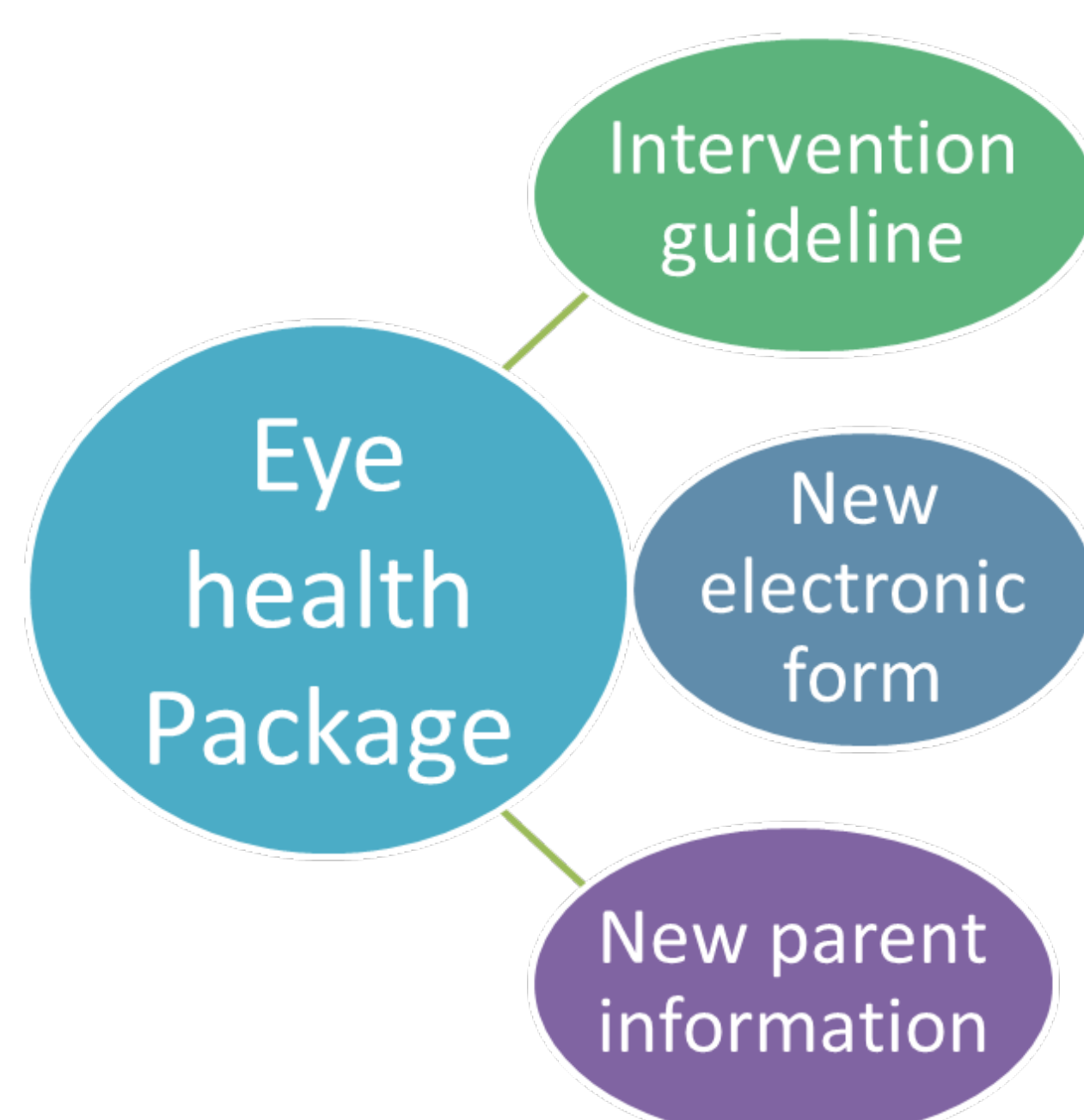
Talking to health teams and mapping out the current process led to the following change ideas for testing:

- Use a health literacy approach for resources and creating a new parent information letter
- Simplifying the clinical practice for vision testing by improving the workflow and creating a new intervention guideline for health teams
- Ensure that clinics have correct equipment and having a standardised checklist for equipment in the guideline
- Changing the electronic data capture form to be fit-for-purpose and align to clinical practice
- Using partners in the community - trialling a partnership with Spec Savers to overcome transport access barriers



Results so far

- The eye health package was launched at staff training days (80 nurses and health workers) with the clinical team
- New intervention guideline, electronic data capture form and parent information along with vision charts provided to all staff for their clinics
- Since the launch of the eye health package there has been a shift on the run chart and an increase to an average of 23 assessments per week (compared to an average of 5 per week before the launch).



Potential impact

The potential impact of this project is to improve equity for Māori and Pacific children by increasing their access to optometry services. Early positive results have been seen following the launch of the eye health package. There has been an increase in the number of vision assessments completed. Our main outcome measure is the number of children who receive corrective vision and glasses, we expect a lag in the data but hope to see an improvement in the outcome measure. The next part of the project is to work with partners in the community to trial a partnership to improve access to optometry services.