

**Health Quality & Safety Commission
Symposium Christchurch
16 June 2014**

**Enabling good lives – a
new approach to
supporting disabled
people**

It began with a question about what disabled people want to do during the day

Underpinned by a vision that disabled people are entitled to have a fair go like all New Zealanders

And swiftly moved to a 'whole of life, all of life' challenge

Encouraging cross-ministry policy operational collaboration and disabled people having more choice and control

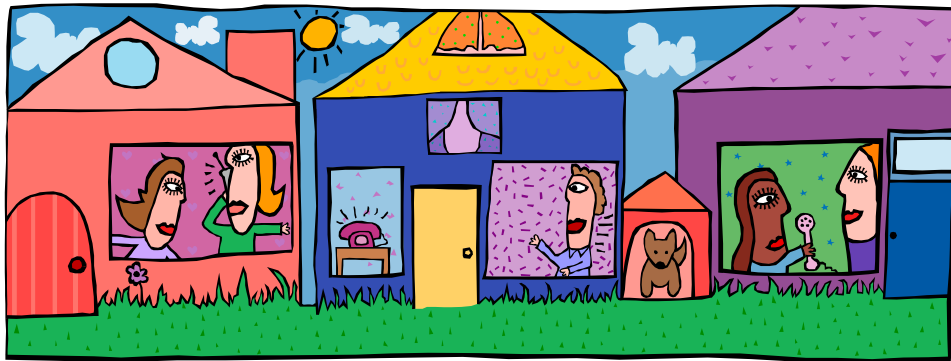


Leading to a Christchurch Demonstration

Currently supporting school leavers with high and complex needs with government disabled persons, families, schools and providers working together to do things differently

Building the capacity of communities, schools and providers

**To be accessible, inclusive
welcoming and 'of service'**



EGL Principles

Self-determination

Beginning early

Person-centred

Ordinary life outcomes

Mainstream first

Mana enhancing

Easy to use

Relationship building

Phase 1

Creating more choices for school leavers by offering 'navigation', pooled funds and flexibility in terms of how to spend the personal budget

Phase 2

Opening up the EGL approach to other disabled people with support needs and designing a new 'system'

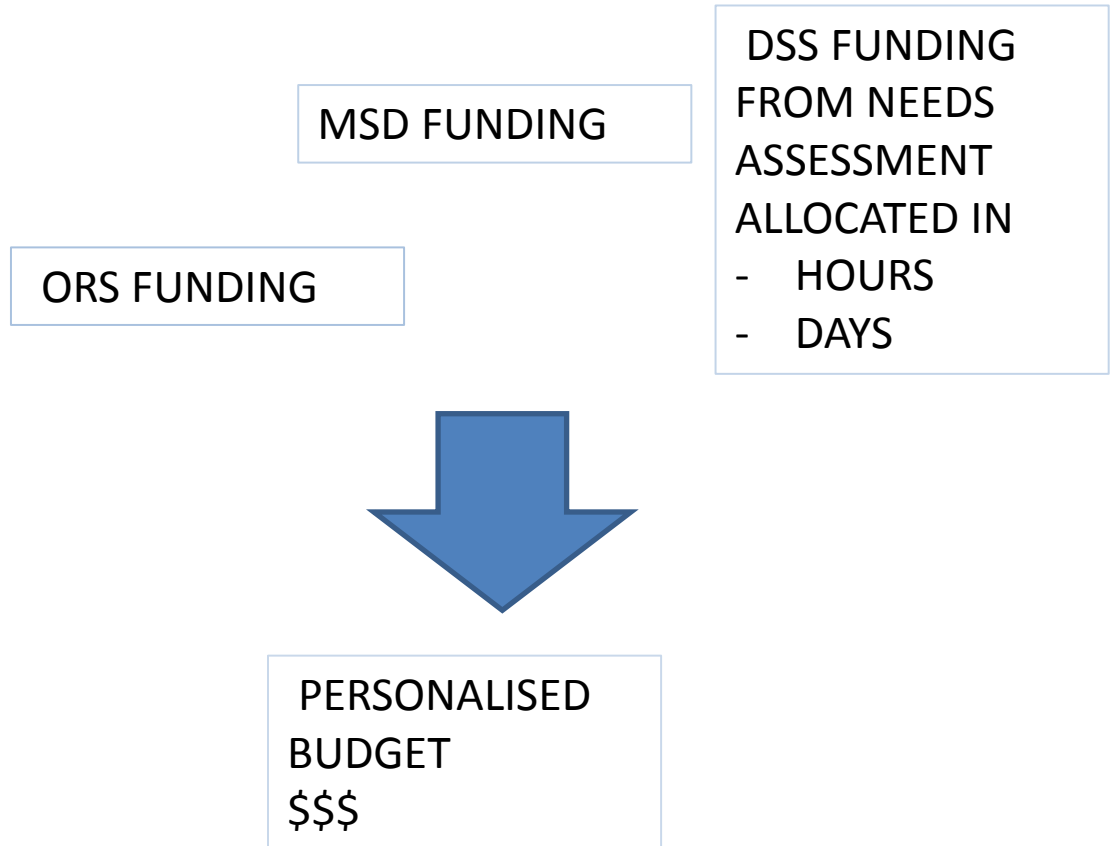
How EGL Works Now

PLANNING

WHAT A GOOD LIFE LOOKS LIKE

Eg

- Home
- Relationships
- What makes us happy
- How can we make money



Opportunities

- Building support with people using current talents to do this
- Understanding and assisting to meet the aspirations and needs of people and their families
- Being able to offer a range of personalised budget management options
- Being part of genuine service transformation that will enable disabled people and their families to have good lives
- Integration of funding streams which enable people to design flexible supports

Provider Lunchbox Meetings

Last Tuesday of every
month

Contact Richard
Buchanan
0272808925

