

Partners in Health



Te Waipounamu Māori Leadership Group For Cancer

Wendy Dallas-Katoa
RN, BA , DPH Clin Teach

The background features a dark, circular Maori koru pattern, a traditional symbol of new life and growth. The pattern is rendered in a glowing green color, with intricate, swirling lines that create a sense of depth and movement. The overall aesthetic is modern and culturally rich.

'Gains in Maori health will be accelerated by quality leadership that can respond positively to a rapidly changing environment.'

Prof Mason Dury

Challenges for Maori Health

Leadership

- Champions for Māori health
- Constantly scanning the environment
- Creating pathways that will empower others

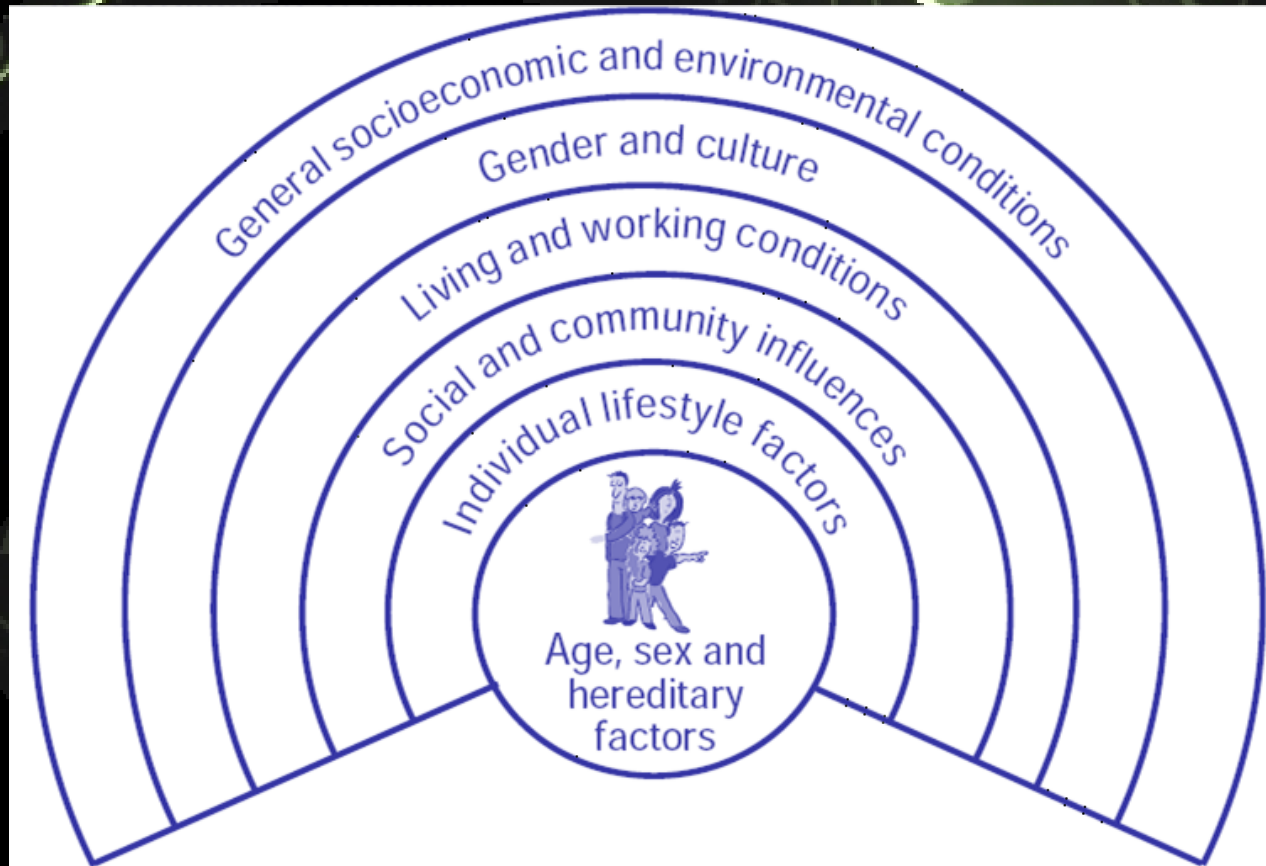
Inequalities & Inequities

- Inequalities
 - Differences between groups
- Inequities
 - Differences that are unfair or unjust

“differences which are unnecessary and avoidable, but in addition are considered unfair and unjust”

Whitehead cited by Paparangi Reid, Bridget Robson (2007)

Determinants of Health



Poorly understood evidence

- Easy to ignore - Be informed about National & International evidence of inequity
- Unclear Data - Easy to mislead

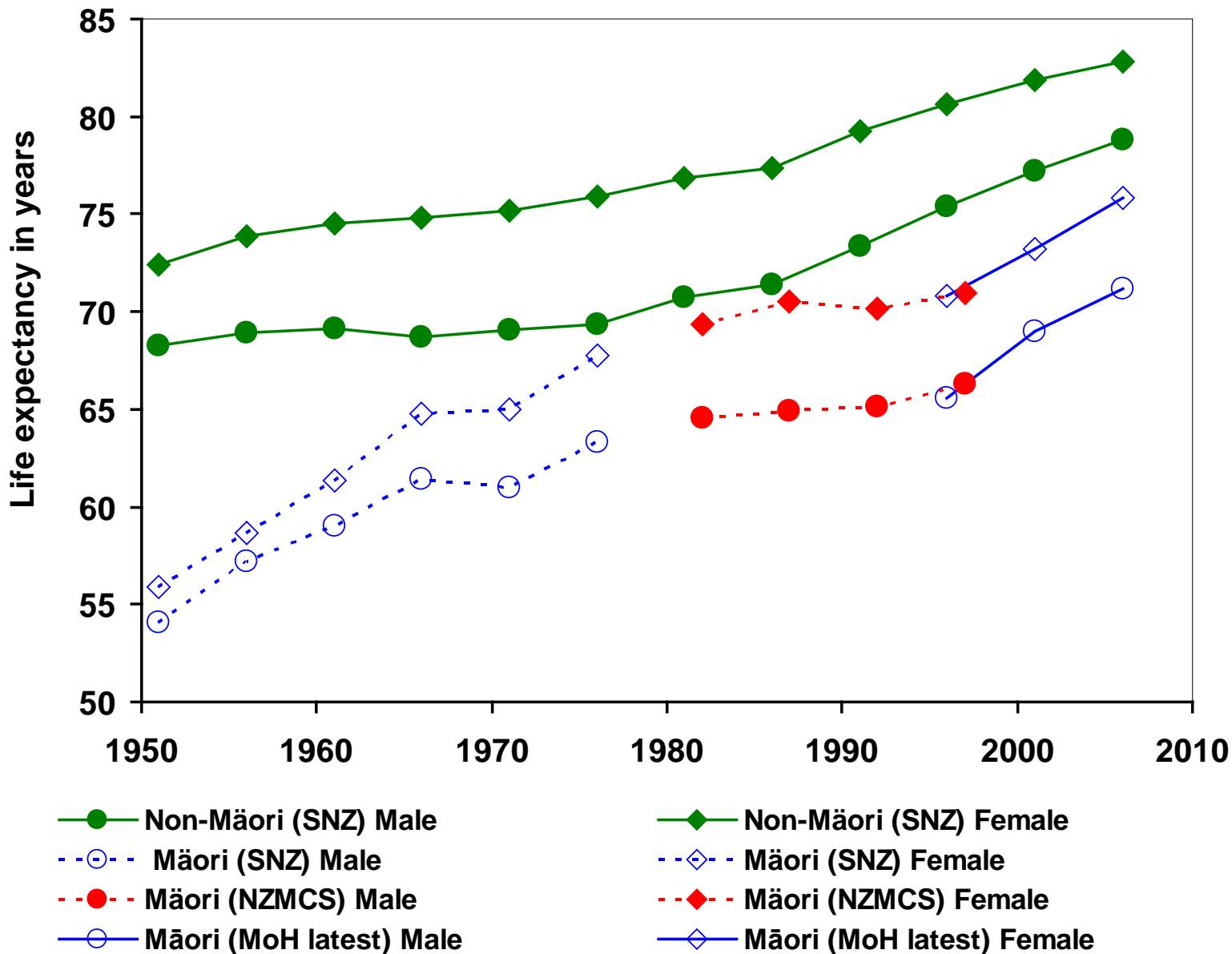
Action:

- Promote rights – right to be counted & part

Life expectancy trends by ethnicity



Health Sciences



AGE STRUCTURE

Figure 1: Age distribution of the Māori population, males and females, 2001

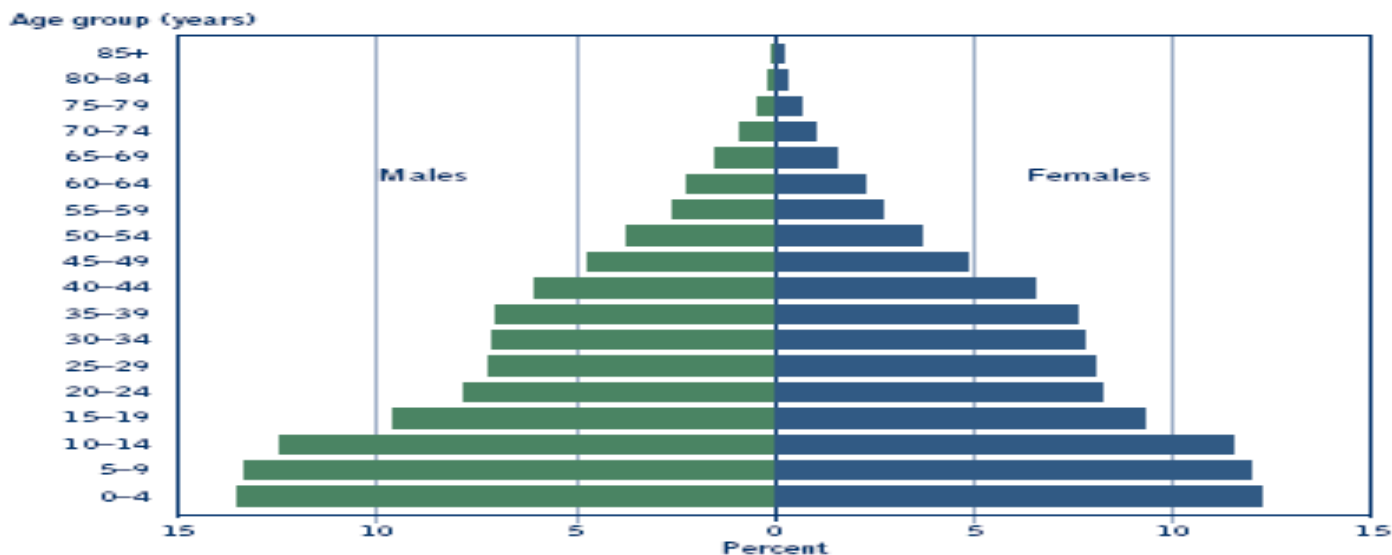
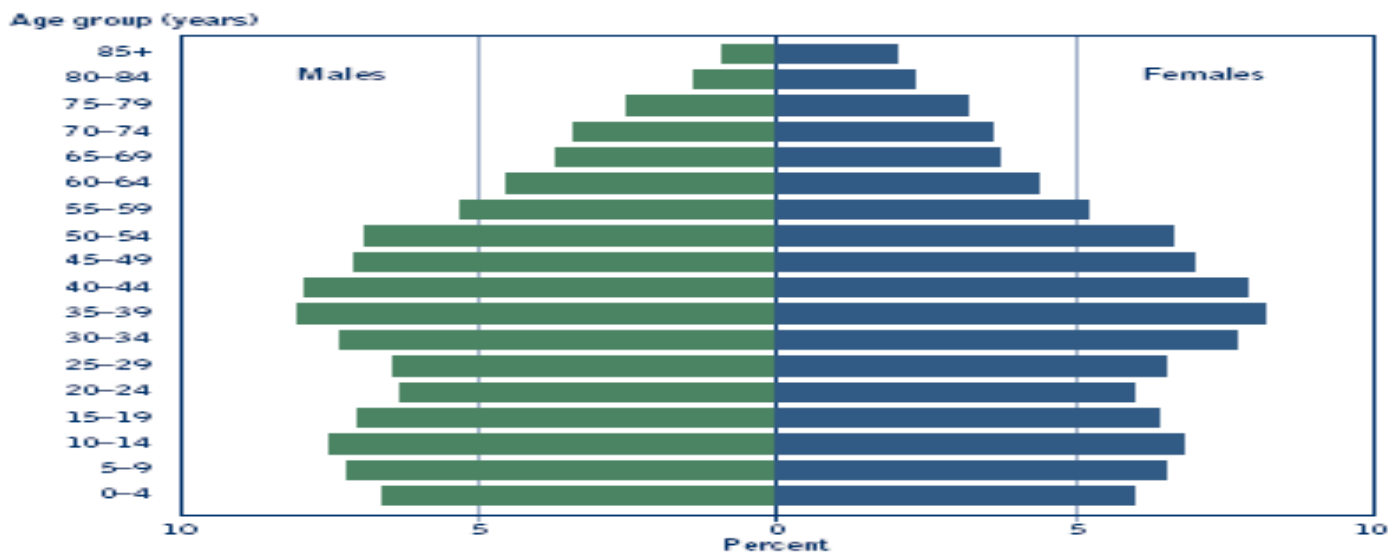


Figure 2: Age distribution of the non-Māori population, males and females, 2001



Maori Health is Everyone's Business

- Public Immunity
- Not New - Not News
- Know & Acknowledge
- State of Maori Health
 - Hauora IV

Te Tiriti o Waitangi

- The Treaty of Waitangi is New Zealand's founding Document. It establishes the relationship between the Crown (government) and the Tangata Whenua (Maori) (first peoples) and requires that the Crown and Maori act reasonably towards each other and in good faith

Te Tiriti o Waitangi

- In health this means the principles of the Treaty of Waitangi are threaded through all health Policies so that workers –
 - Provide support that is respectful and protective of Maori values and culture.
 - Provide support that includes whanau, iwi and hapu in decision making.
 - Provide support that ensures power in the relationship is shared with that person



The “3 P’s” are:

Partnership

- Respecting and valuing difference
- Having empathy
- Sharing knowledge and empowering others
- Sharing the decision making process

Participation

- To be inclusive of the person and their whānau
- Open discussion
- Genuine consultation
- Good faith
- Endorsing and supporting people to share their ideas

Protection



- Advocacy
- Honesty
- Protection of the things that are important to that person

Te Waipounamu Māori Leadership Group For Cancer

- Participation – getting involved
- Partnership – making decisions together
- Identifying Regional Māori Priorities – determine what things are important to your region
- Plan Projects together – Assess for Equity
- Monitor & Evaluate – Plan what to monitor and evaluate

