

Falls Collaborative

interRAI Data
11.2.14

Sally Heppenstall
interRAI Facilitator – SIDU
sally.heppenstall@sidu.org.nz



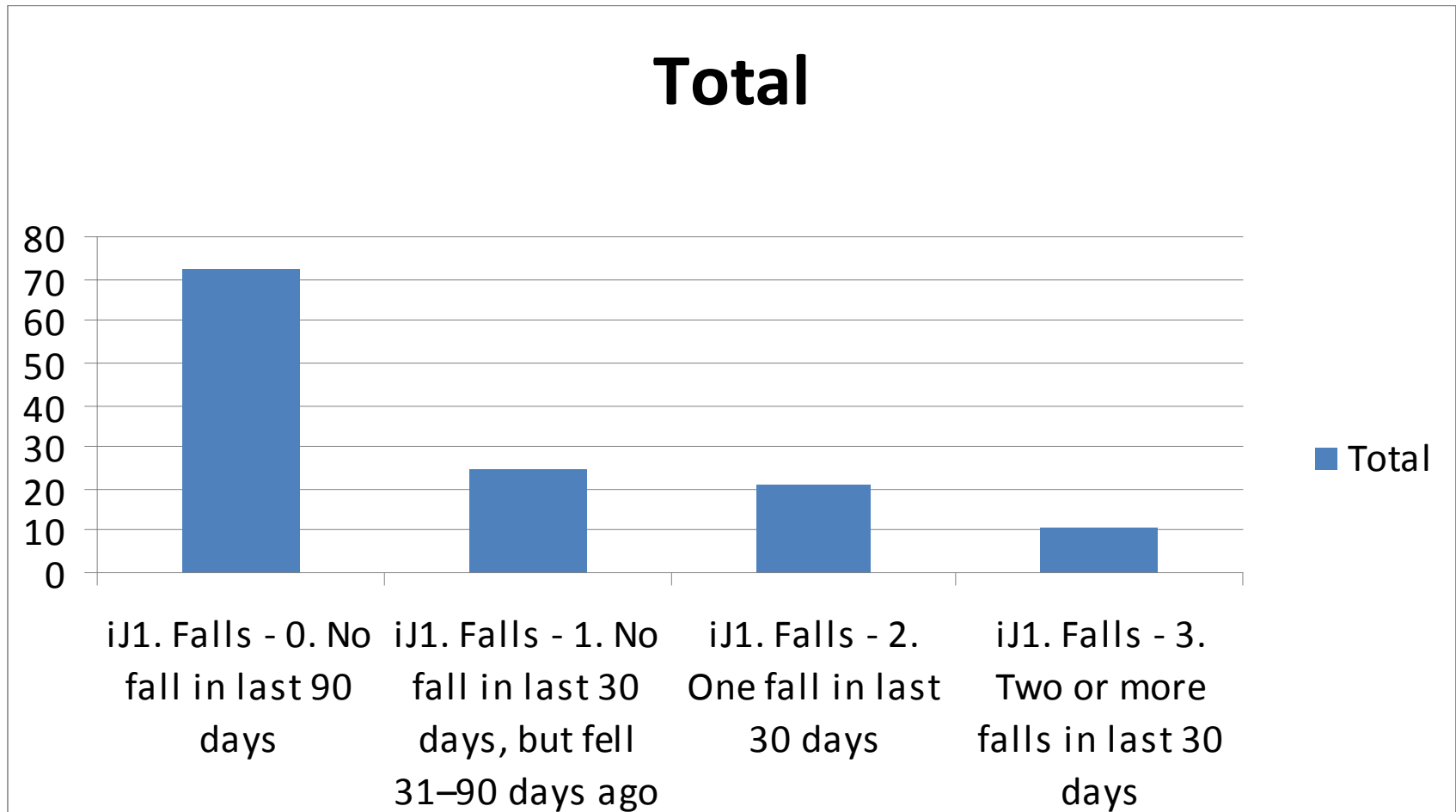
The Data

N=117 - from 5 Facilities

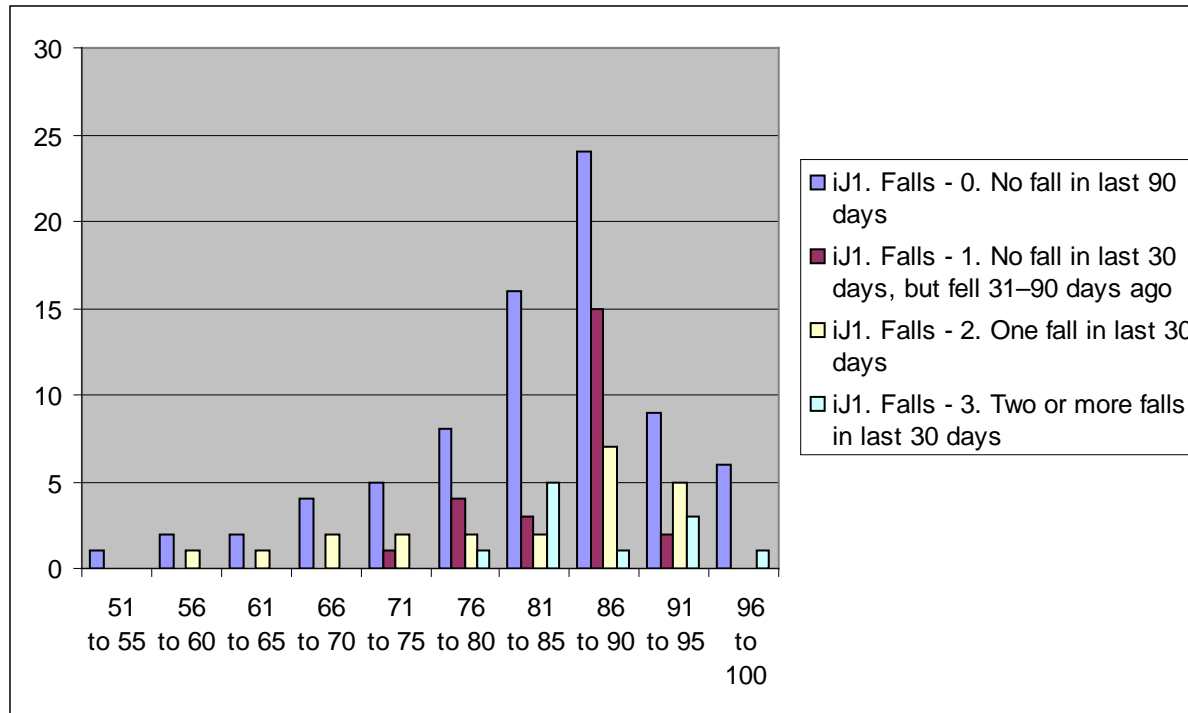
Thank you to

- Churtonleigh
 - Spratt
 - Vincentian
 - Riverleigh
 - Carter Court
-
- Richard Allen DHBSS

Number of residents with falls



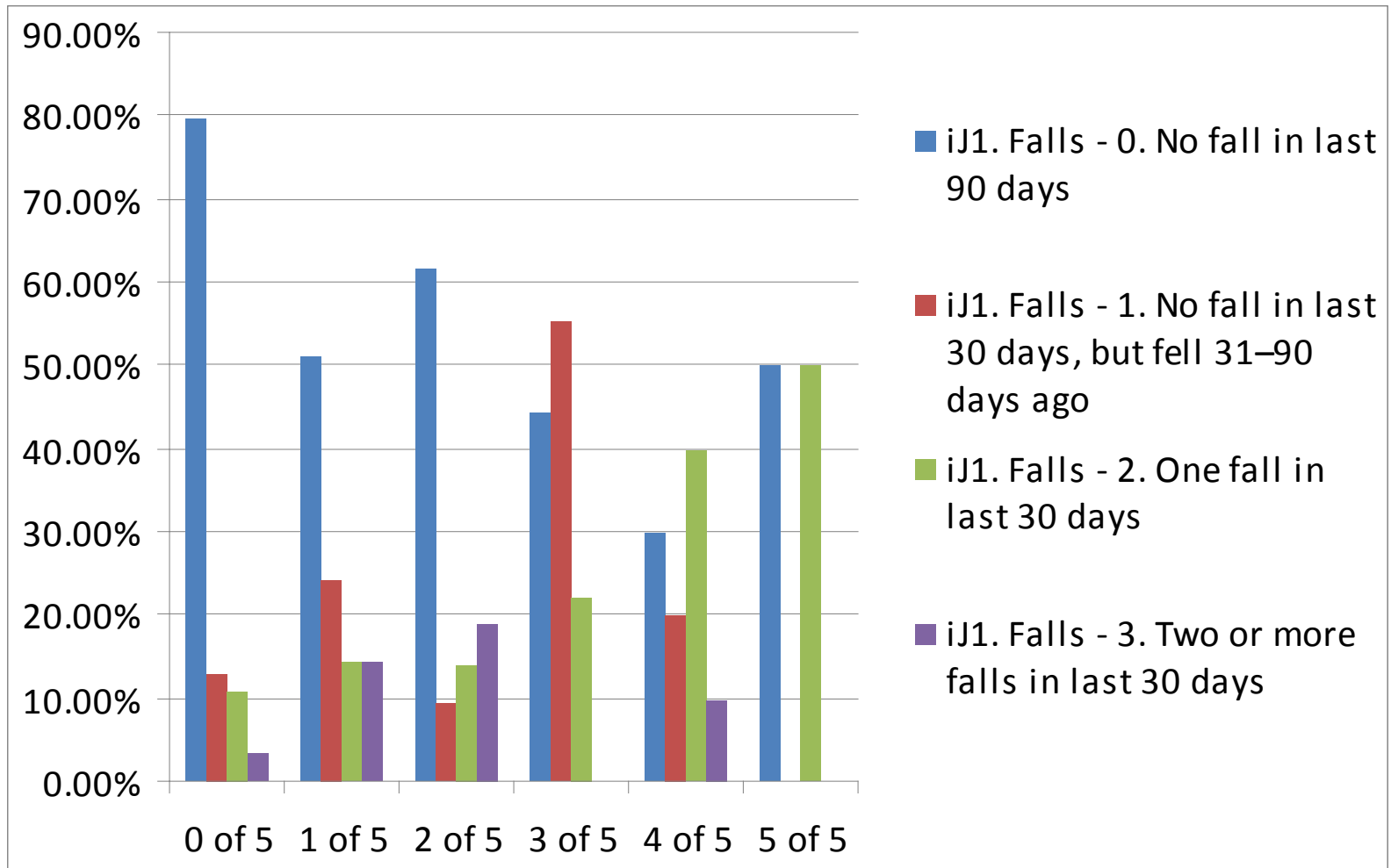
Falls and Age



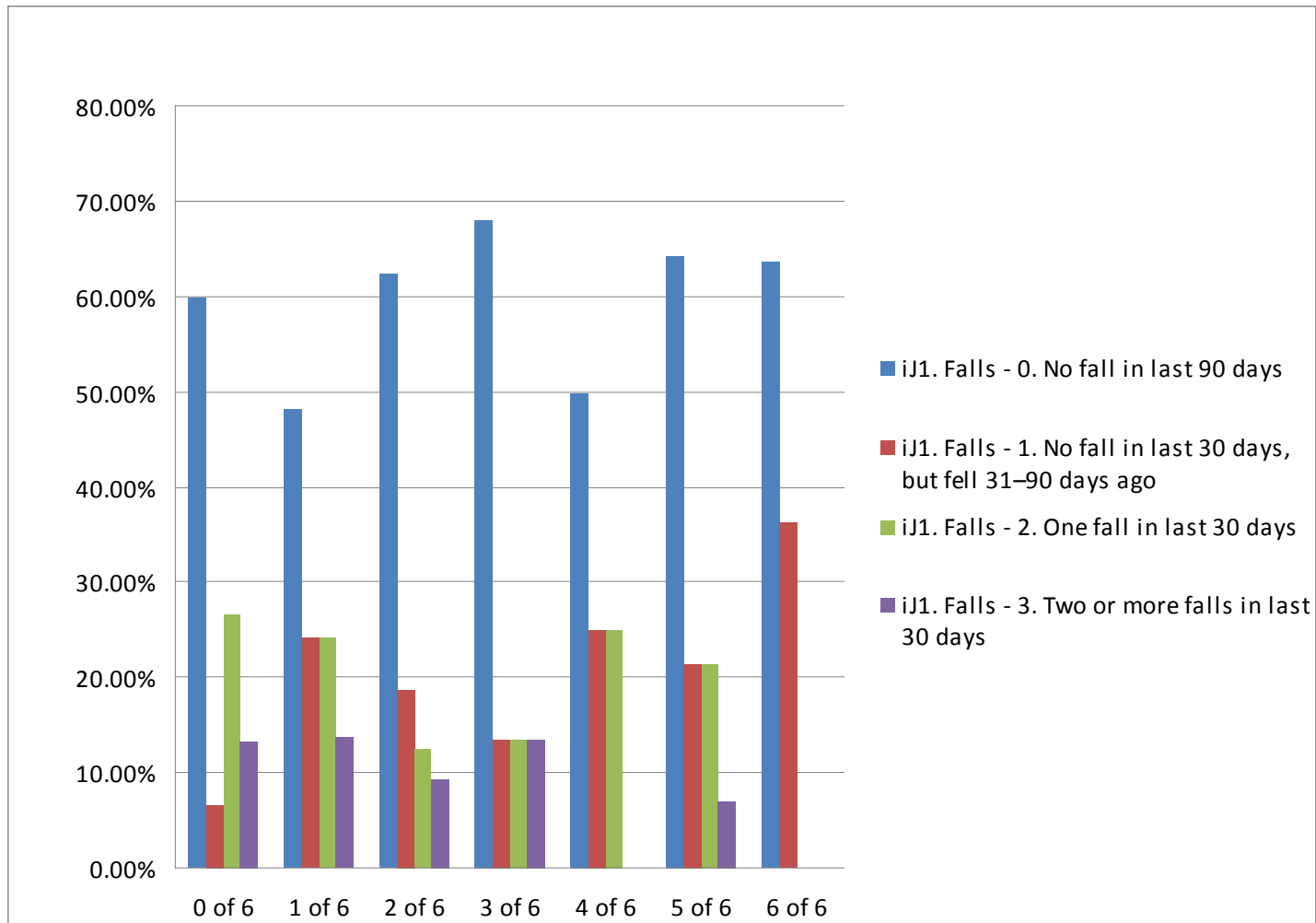
Falls and Diagnoses

RAI I - Disease diagnoses	iJ1. Falls - 3. Two or more falls in last 30 days	iJ1. Falls - 2. One fall in last 30 days	iJ1. Falls - 1. No fall in last 30 days, but fell 31– 90 days ago	Grand Total
Dementia other than Alzheimer's disease	4	6	10	19
Stroke / CVA	4	7	8	19
Congestive heart failure	7	3	8	18
Coronary heart disease	2	3	10	15

Falls and CHESS



Falls and Cognition



Falls and ADL Hierarchy scale

