

Safe use of opioids national collaborative



Aim

MercyAscot aims to reduce the harm related to opioid use by 25% in the participating areas of the hospital by June 2016, specifically:

- Respiratory depression
- Over-sedation

Scope

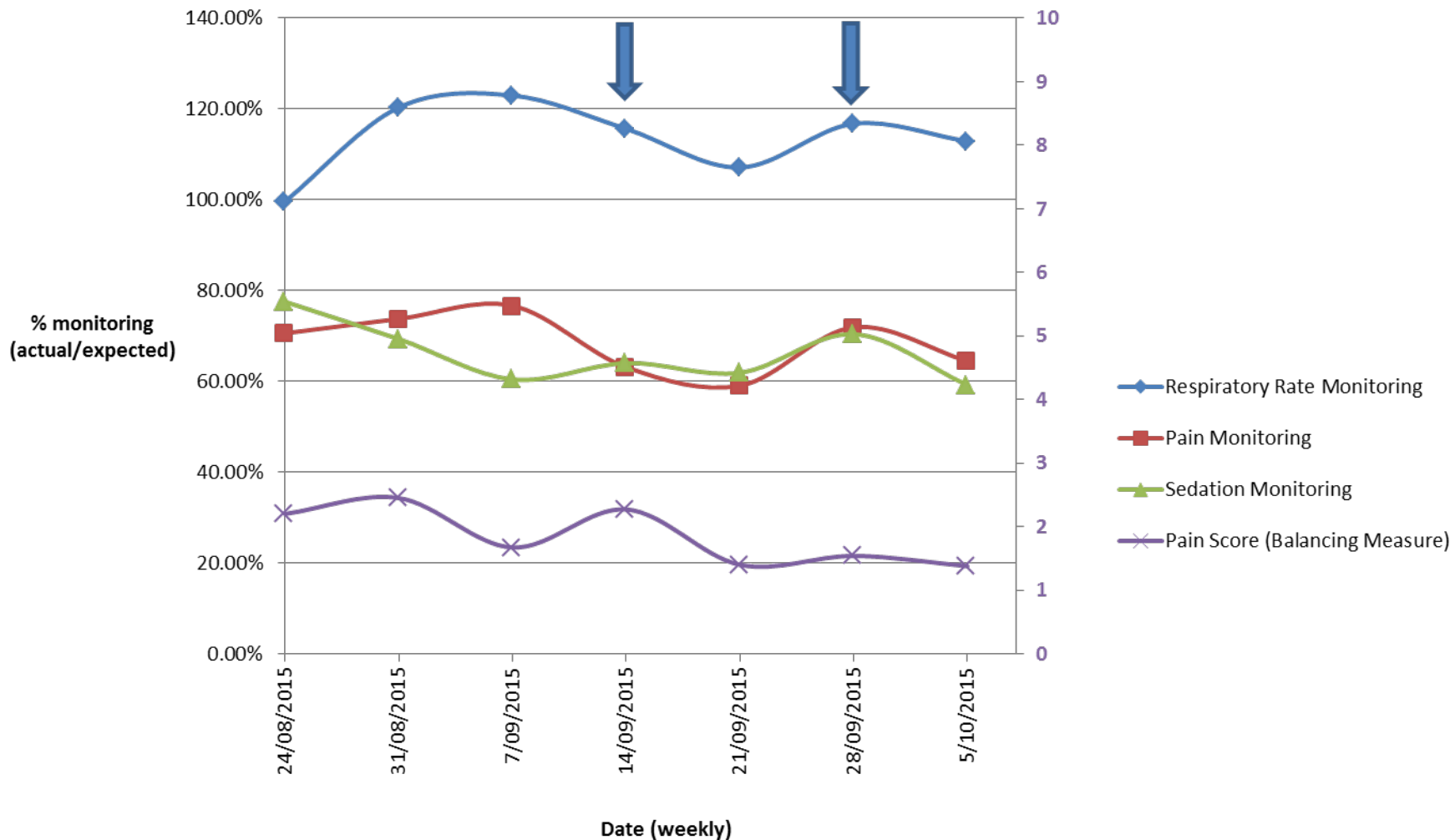
Areas	Inclusions	Exclusions
Pilot/testing area	<ul style="list-style-type: none"> • Patients identified to have required naloxone • Cardiothoracic ward Mercy, Orthopaedics ward Mercy, Orthopaedics ward Ascot. 	<ul style="list-style-type: none"> • All other wards • Patients not given opioids
Type of harm	<ul style="list-style-type: none"> • Over-sedation (Sedation score ≥ 2) • Opioid-related ventilatory impairment, including severe events e.g cardiac arrest (Sentinal event) (Respiratory depression is rate <10mins/min with sedation score ≥ 2, or rate <8mins/min) 	<ul style="list-style-type: none"> • All other types of harm
Type of patients	<ul style="list-style-type: none"> • All surgical inpatients receiving opioids in the test wards (Note this is all opioids). 	<ul style="list-style-type: none"> • Patients not receiving opioids

List of interventions tested

- Naloxone audits – started June 2015
- Poster education campaign – started Aug 2015
- EWSS reformat – started June 2015
- Developed “Clinical management of opioids” policy – started Sept 2015
- EWSS revised – Sept 2015
- Sedation score education – tested Oct 2015

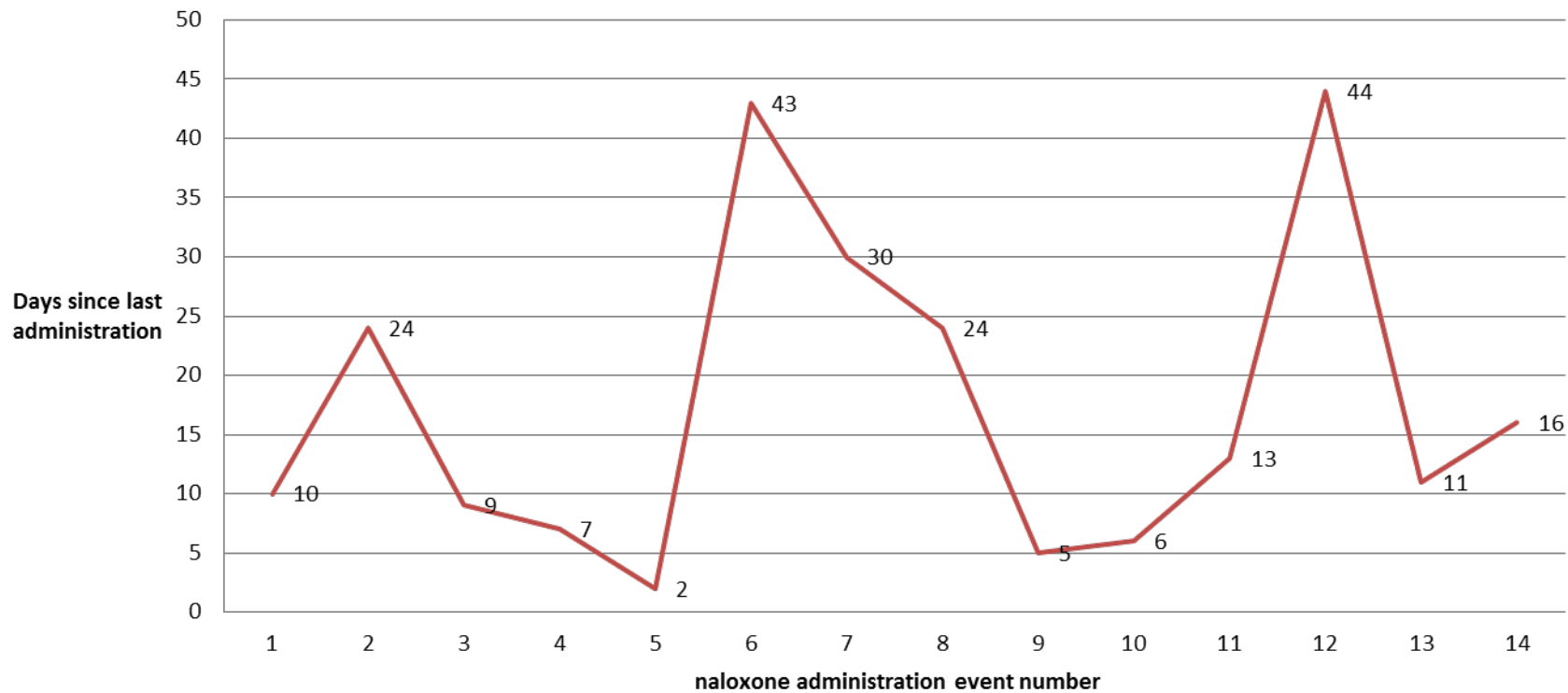
What the data shows

Average monitoring as % of expected monitoring



What the data shows

Days between naloxone administration
Jan-Oct 2015



Key lessons/achievements

- Education around the sedation score has improved understanding
- Re-formatting EWSS is working
- Unclear on whether the policy on timing of monitoring or adding summary of this to EWSS has had an impact on reducing over sedation / resp rates, positive feedback from nurses
- Posters creating some talking points – unclear how many nurses are reading these

Struggles

- Time, leave
- Small team involved in project
- Slow to get all relevant parties to review and agree on document/policy change(s)
- Communication: ensure all staff are aware of the project and read relevant information
- Change in staff role affecting EWSS team
- Change in data collection is making graphs difficult

Successes

- Re-formatted EWSS form
- Education campaign posters