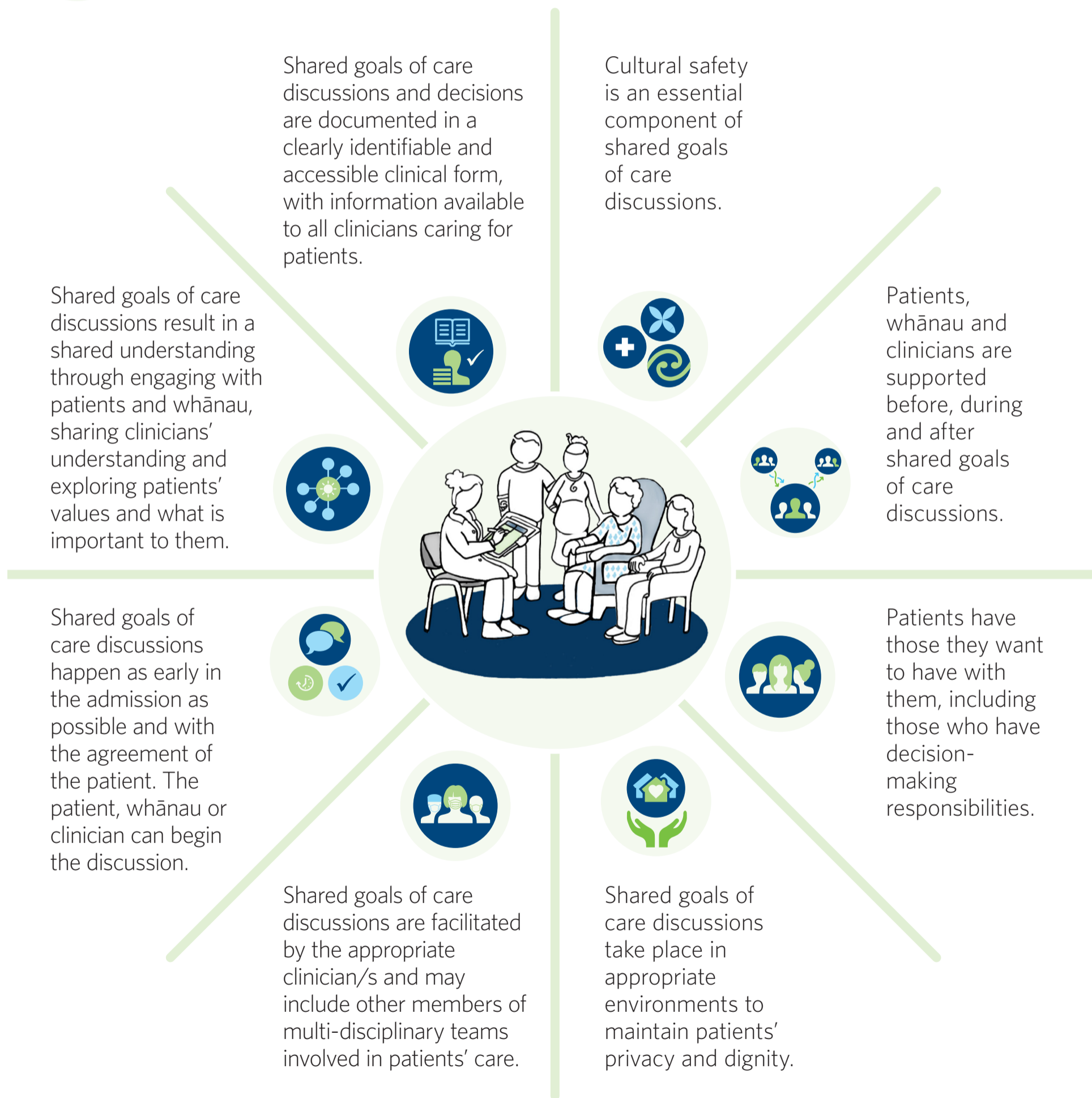


Shared goals of care principles

Shared goals of care are when patients, whānau and clinicians, explore patients' values, the care and treatment options available and agree the goal of care for the current admission if the patient deteriorates.



Health service providers ensure that governance systems, organisational culture and structures encourage shared goals of care discussions through resourcing and by supporting patients, whānau and clinicians, to have these discussions.



www.hqsc.govt.nz



HEALTH QUALITY & SAFETY
COMMISSION NEW ZEALAND
Kupu Taurangi Hauora o Aotearoa

newzealand.govt.nz