

Me pēhea e mōhio rawa ai me te whakamaimoa tonu i te mate roro o ngā pēpi hou

Ia tau, i ia tau i Aotearoa nei e āhua 67 ngā pēpi hou ka whakatauria ki te mate roro. Ina kore e whakamaimoatia i muri tata tonu mai ka huri hei mate roro pēpi hou me te aha ka pērā tonutia mō ake tonu atu.

Ko te rongoa pai rawa atu ko te whakamātao i muri tata tonu mai.

 **Kia mōhio**

 **Kia kōrero**

 **Kia whakamātao**

1 Kia mōhio

Te mate roro pēpi hou:

- kia whakaora i te pēpi i tōna whānautanga mai
- he iti te kaute Apgar i te whānautanga mai
- he tino kamakama, tino ngoikore rānei, tē ngote

NEWS (newborn early warning score):

- hau pūkoro tinana/waikawa waiū.



2 Kia kōrero

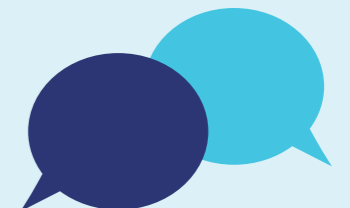
He mea tino nui te whakamōhio atu.

Kōrerotia tō āwangawanga ki tētahi hoa.

whakakaha ake mā te kōrero ki te rōpū pēpi hou.

Whakaritea he whakawhitinga mō te taurima tonu.

Hoatu ki te whānau he whiringa kia aromatawai i te whenua.



3 Whakamātao

KAUA E TAKAROA

Me tīmata te mahi whakamātao roro nō roto mai i te ono haora whai muri i te whānautanga mai.

KIA WAVE TE WHAKAMĀTAO.

